

Quick Tapping Anchor :

is a plastic insert in truncated cone with the round recess plate in the bottom, use for cling outside and inside wall.

Quick Tapping Anchor has a round recess for the screw DIN 571 which creat fast and safe for turning screw.

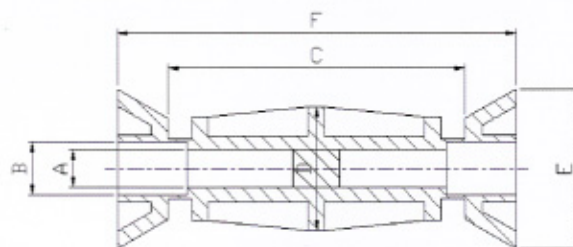
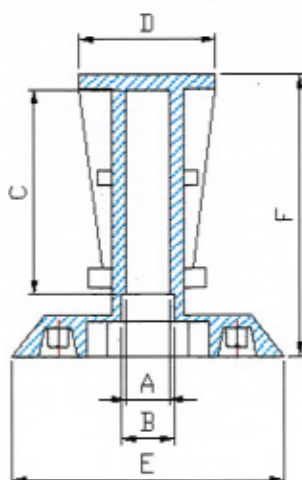


Code **QA**

QA-1260



QA-8058



QA-12120



QA-12100



Description	Part No.	Dimensions/mm.						SWL	Packing
		A	B	C	D	E	F		
Quick Tapping Anchor (Q.A)	QA-M8058	5.3	7.8	43	28	40	58	300 kg.	100
	QA-M1206	9.5	11.7	44	30	60	60	500 kg.	100
	QA-M12100	9.5	13.2	74.5	31	40	100	500 kg.	100
	QA-M12120	9.5	13.2	94.5	31	40	120	500 kg.	100