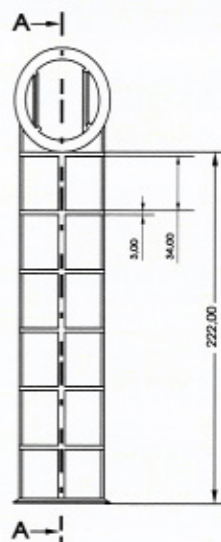
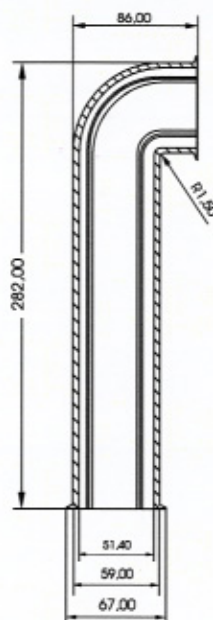
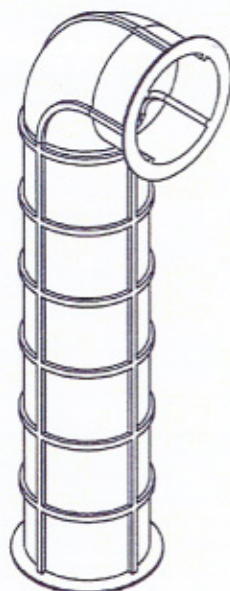


A faster way for connecting precast panel with more accuracy and stronger reinforcement. Grout tubes are cast in the panel in order to provide joints for starter rebar. They can be used on vertical and overhead concrete eliminating the need for expensive form work. Grout Tube caps replace a time-consuming taping pipe ends and besides make it easy to identify after casting.

Grout tube keel and inside screw undercut are design for more durable characteristic and better attachment to the panel.

Code **GT**



INSTALLATION วิธีติดตั้ง

